

TALL CABINETS, CORNER CABINETS & REFRIGERATOR CABINET SHOULD ARRIVE AS SINGLE UNITS. ON DRAWING LABELED AS INDIVIDUAL CABINETS. MAY BE LABELED ON BOXES BY ACTUAL HEIGHT RATHER THAN AS SEPARATE CABINETS.

Manufacturer: COVERED BRIDGE CABINetry  
Door Style: HANOVER  
Drawer Style: 5pc  
Overlay: FULL  
Finish: Dapple  
Crown: 1115-3  
Light Rail Molding: 1025  
Countertop: CAMBRIA  
Pattern: INVERNESS BRONZE

1-Combine TUS302487/Bottom with WR3018/Top - SEE CAD  
Bottom Tall Doors to Line up with TOVND - 66" off Floor  
Top of Oven Opening at 66" off Floor  
Removable Toe Box - to be installed on Job Site  
Add additional DROT to Bottom Section - 5 Total

2-Leg increased to 38 7/8" and partition added.  
Tray divider to be added as a partition full height of cabinet to leave room for 33" Lazy Susan. - SEE CAD

After Market Towel Pullout to be added onsite.

3-Reduce width to 34-1/2  
Increase Depth to 26" (or required depth for installation of Frigidaire GCC13067AB Cooktop and GE UVD6301SPSS Downdraft vent  
Scoop Drawer Box - Reduce Drawer Box Depth to 18"  
Shelf to be made to fit in front of Downdraft vent, spec's provided.

SEE CAD

4-Add Cutting Board  
Extend right end 1 1/2" with Decorative End Panel

Slab Drawer Front on Top Drawer

5-Combine TOVND31-1/2x24x87/Bottom with WR31-1/2 x 24 x 18/Top - SEE CAD  
Two Drawers Equal Height Below Oven Opening -  
Top of Oven Opening at 66" off Floor  
Removable Toe Box - to be installed on Job Site

6-Trash/Recycle

7-4 Pullouts, 2 each side

8-Tall Combined Cabinet - SEE CAD  
Combine TOVND31-1/2x24x87/Bottom with WR31-1/2x24x18/Top  
Wide Top Rail - 3/4"

WR31-1/2x2418 section to have Reed Glass

9-Tall Combined Cabinet - SEE CAD  
Combine TUS302487/Bottom with WR3018/Top  
Wide Top Rail - 3/4"

WR3018 section to have Reed Glass

10-Combined Cabinet  
Combine WR3915/Bottom with WR3918/Top  
Wide Top Rail - 3/4"

WR3918 section to have Reed Glass

11-W2742.BUTT to have Reed Glass  
Wide Top Rail - 3/4"

TALL CABINETS, CORNER CABINETS & REFRIGERATOR CABINET SHOULD ARRIVE AS SINGLE UNITS. ON DRAWING LABELED AS INDIVIDUAL CABINETS. MAY BE LABELED ON BOXES BY ACTUAL HEIGHT RATHER THAN AS SEPARATE CABINETS.

By Signing Below I agree that the layout provided is as discussed and that measurements, if not provided by Hart Design Group, have been verified.

Customer Signature

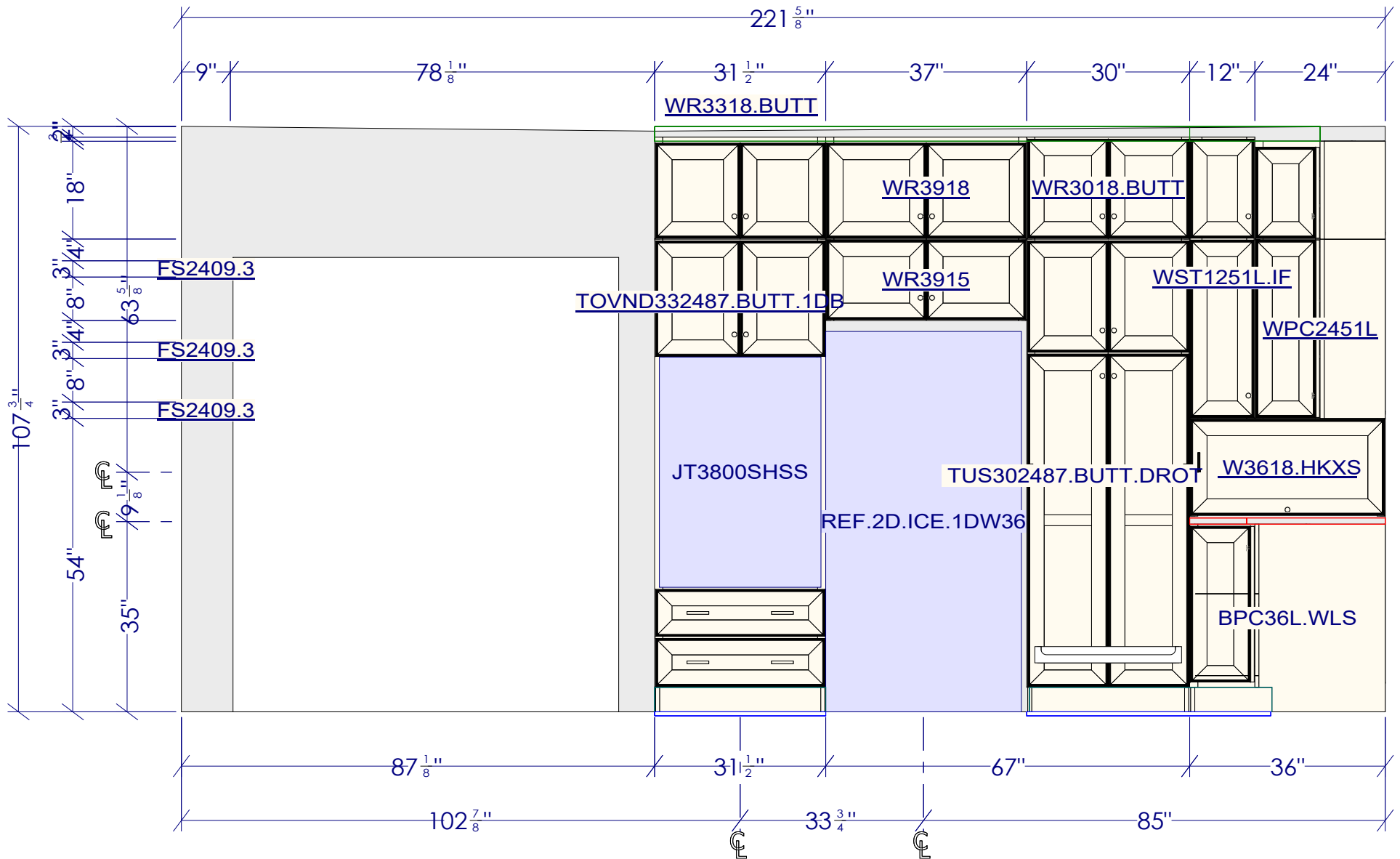
All dimensions & size designations given are subject to verification on job site and adjustment to fit job conditions.



This is an original design and must not be released or copied unless applicable fee has been paid or job order placed.

Designed: 4/24/2023  
Printed: 8/17/2023

TALL CABINETS & REFRIGERATOR CABINET SHOULD ARRIVE AS SINGLE UNITS. ON DRAWING LABELED AS INDIVIDUAL CABINETS. MAY BE LABELED ON BOXES BY ACTUAL HEIGHT RATHER THAN AS SEPARATE CABINETS.

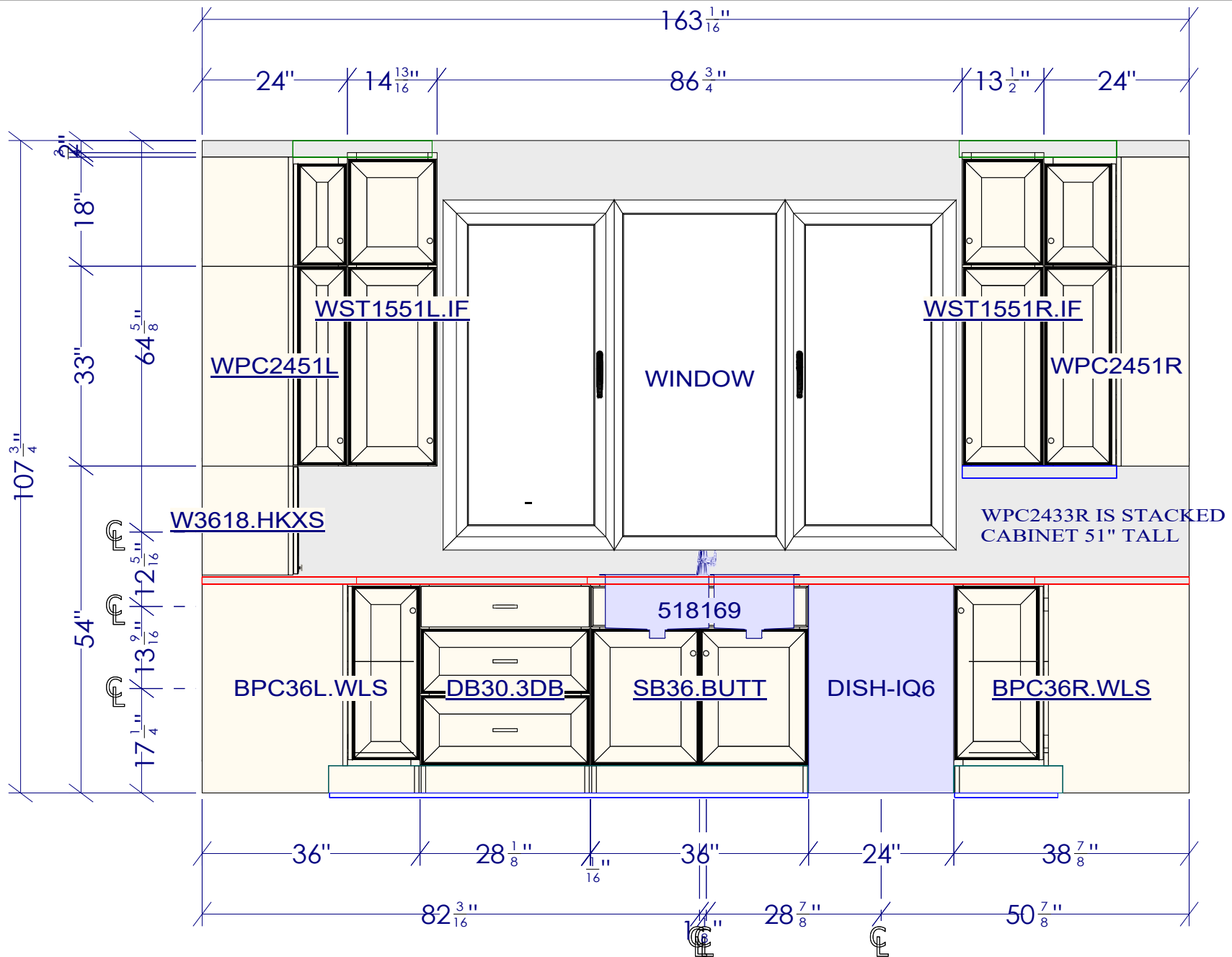


All dimensions & size designations given are subject to verification on job site and adjustment to fit job conditions.



This is an original design and must not be released or copied unless applicable fee has been paid or job order placed.

Designed: 4/24/2023  
Printed: 8/17/2023

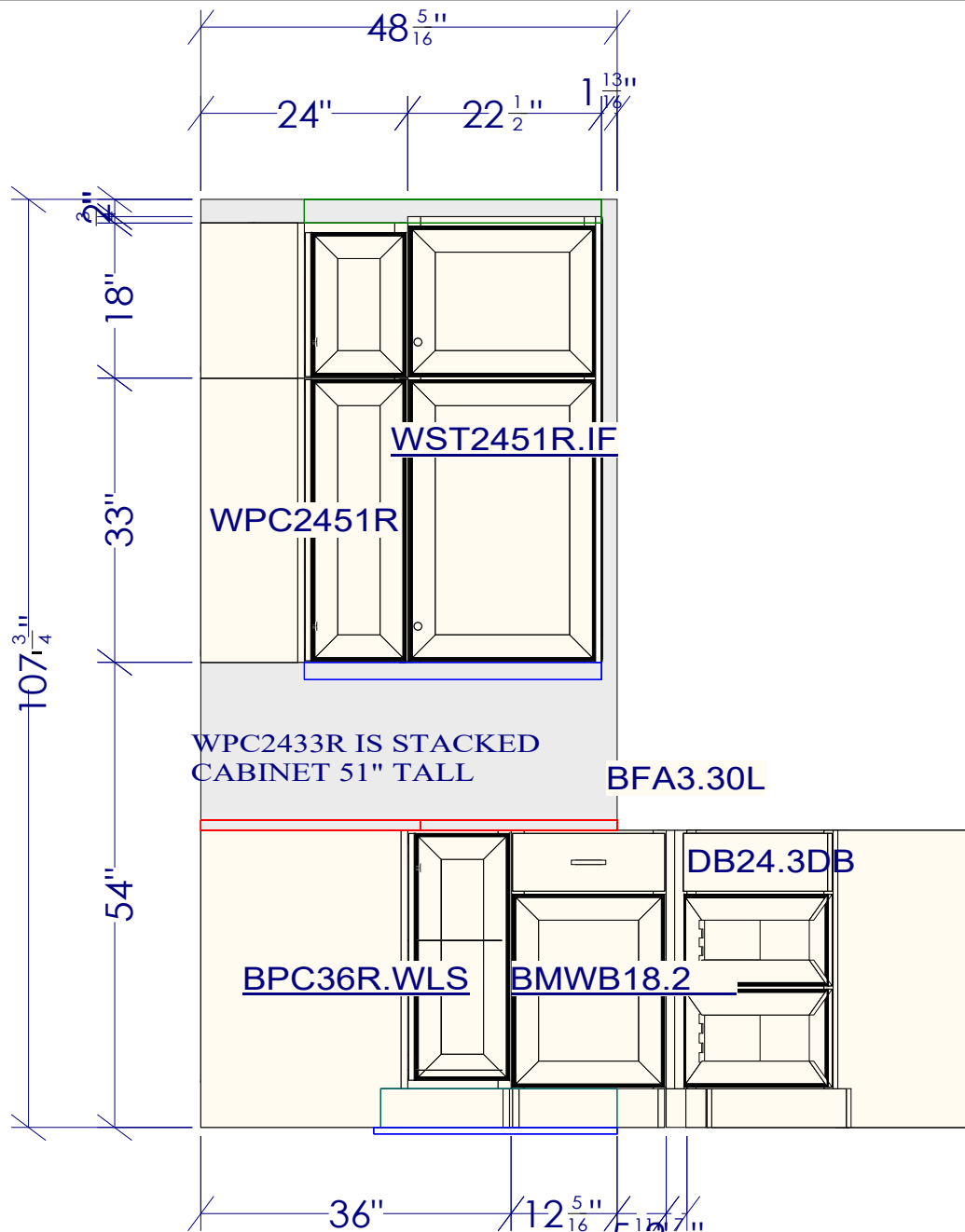


All dimensions & size designations given are subject to verification on job site and adjustment to fit job conditions.



This is an original design and must not be released or copied unless applicable fee has been paid or job order placed.

Designed: 4/24/2023  
 Printed: 8/17/2023



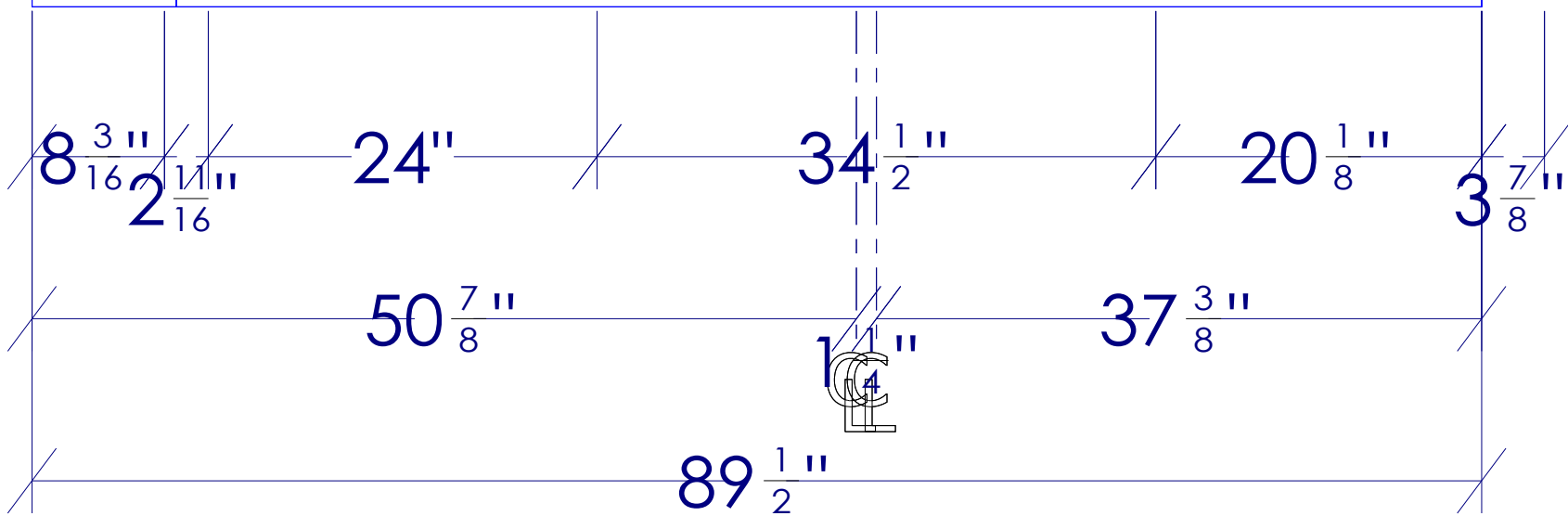
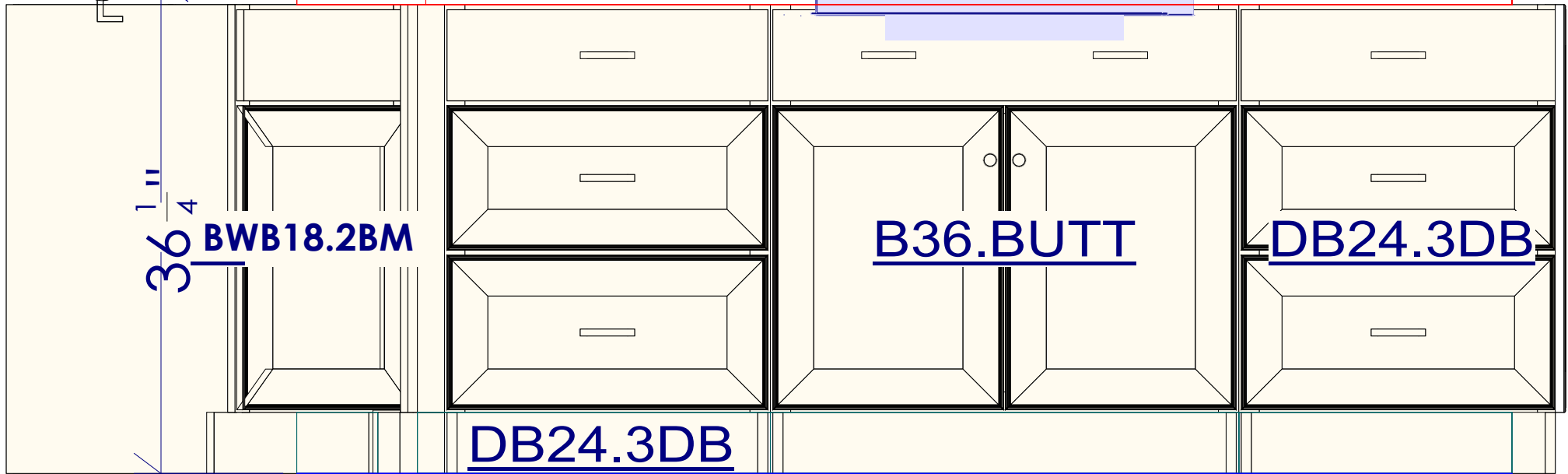
All dimensions & size designations given are subject to verification on job site and adjustment to fit job conditions.



This is an original design and must not be released or copied unless applicable fee has been paid or job order placed.

Designed: 4/24/2023  
 Printed: 8/17/2023

# BFA3.3



All dimensions & size designations given are subject to verification on job site and adjustment to fit job conditions.



This is an original design and must not be released or copied unless applicable fee has been paid or job order placed.

Designed: 4/24/2023  
Printed: 8/17/2023

5DBWP8434

$4 \frac{3}{16}$ "

$89 \frac{1}{16}$ "

$\frac{7}{16}$ "

$89 \frac{1}{2}$ "

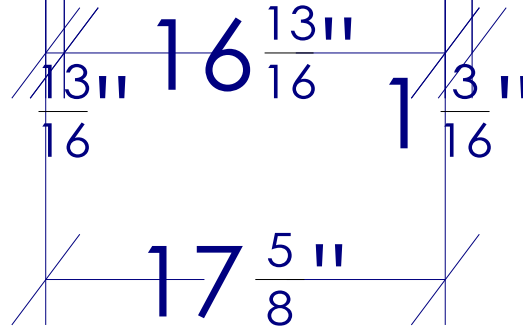
All dimensions & size designations given are subject to verification on job site and adjustment to fit job conditions.

2020

This is an original design and must not be released or copied unless applicable fee has been paid or job order placed.

Designed: 4/24/2023  
Printed: 8/17/2023

# B18R.FHD

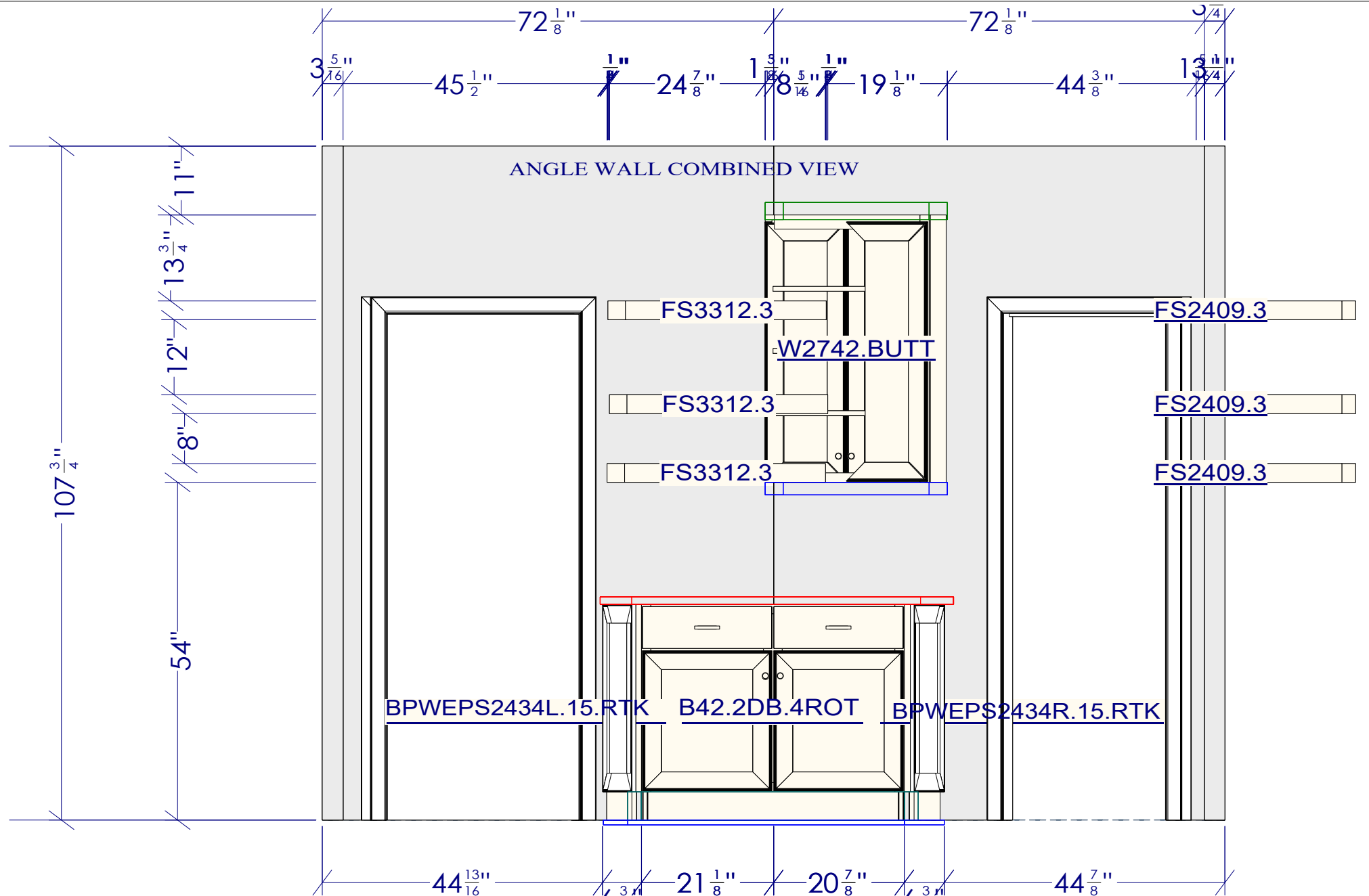


All dimensions & size designations given are subject to verification on job site and adjustment to fit job conditions.

2020

This is an original design and must not be released or copied unless applicable fee has been paid or job order placed.

Designed: 4/24/2023  
Printed: 8/17/2023



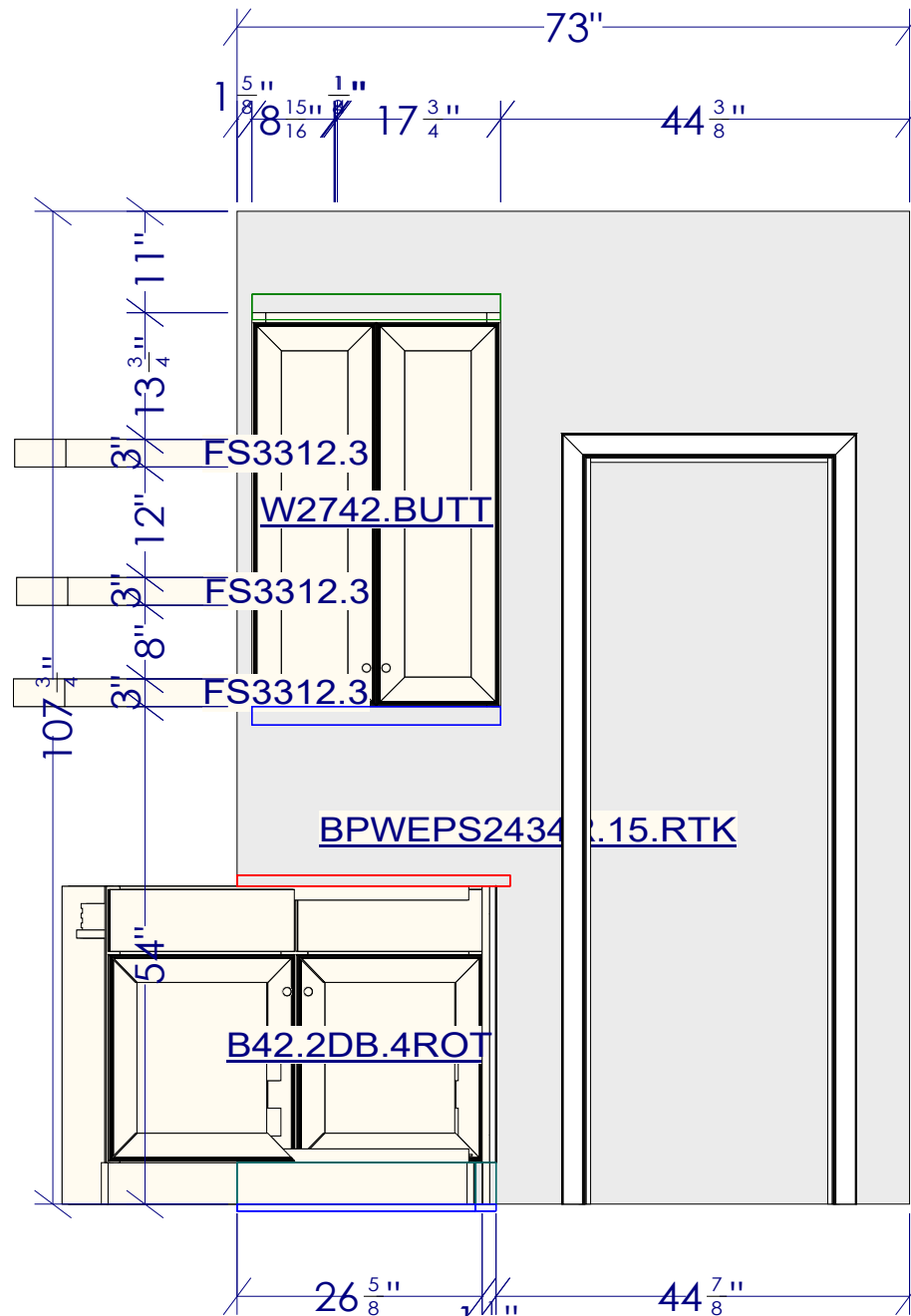
All dimensions & size designations given are subject to verification on job site and adjustment to fit job conditions.



This is an original design and must not be released or copied unless applicable fee has been paid or job order placed.

Designed: 4/24/2023  
Printed: 8/17/2023



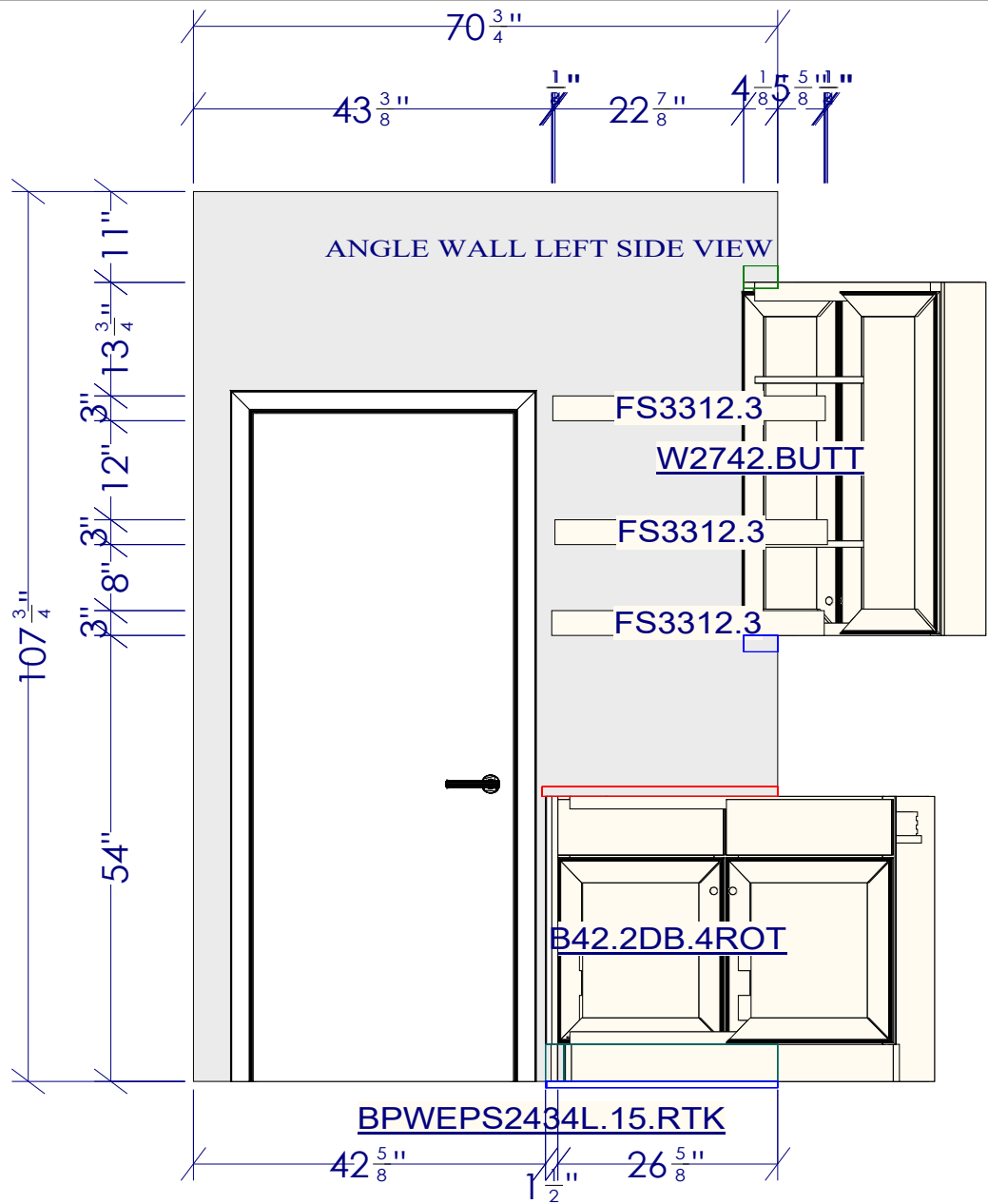


All dimensions & size designations given are subject to verification on job site and adjustment to fit job conditions.



This is an original design and must not be released or copied unless applicable fee has been paid or job order placed.

Designed: 4/24/2023  
 Printed: 8/17/2023

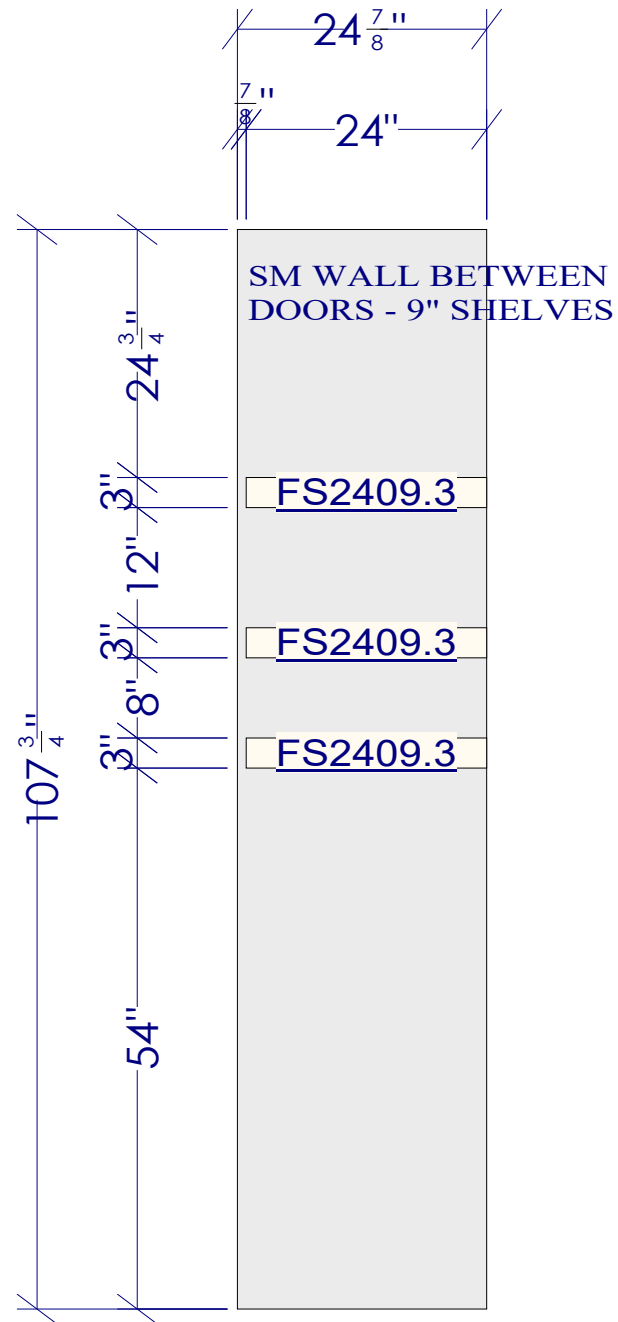


All dimensions & size designations given are subject to verification on job site and adjustment to fit job conditions.



This is an original design and must not be released or copied unless applicable fee has been paid or job order placed.

Designed: 4/24/2023  
 Printed: 8/17/2023



All dimensions & size designations given are subject to verification on job site and adjustment to fit job conditions.



This is an original design and must not be released or copied unless applicable fee has been paid or job order placed.

Designed: 4/24/2023  
 Printed: 8/17/2023