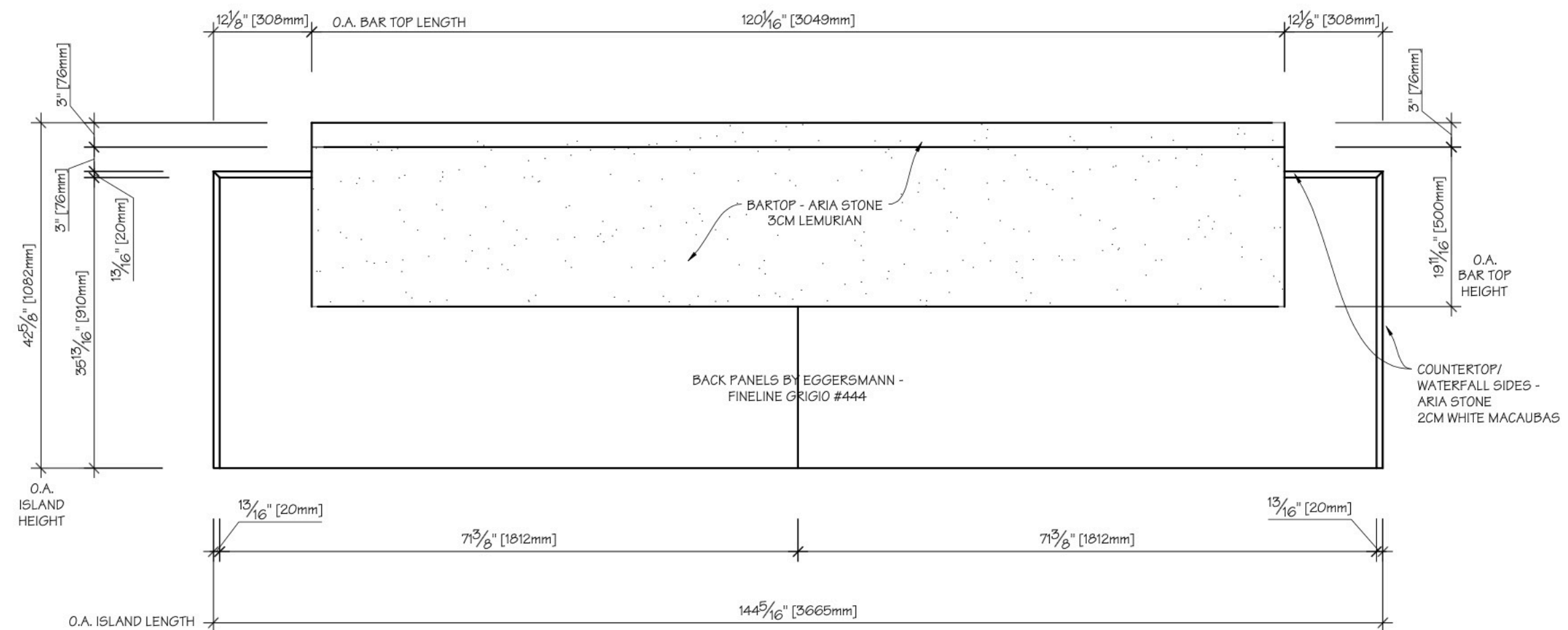


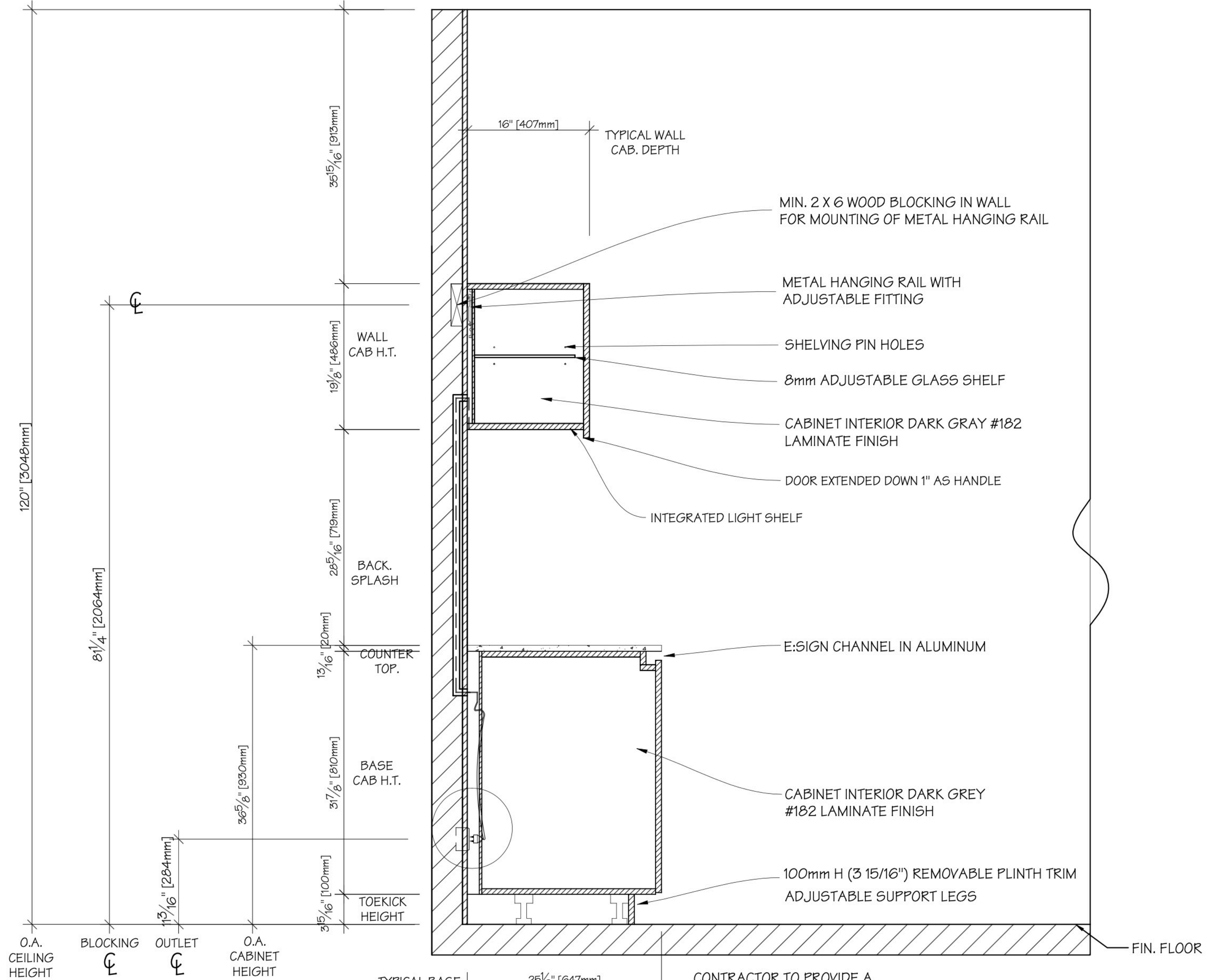
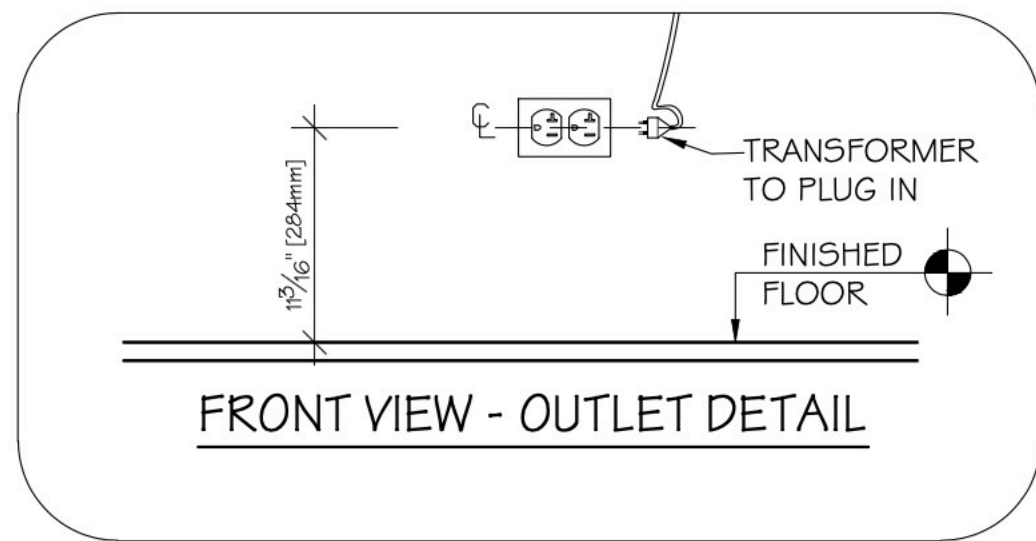
B

**ARIA STONE SHOWROOM
 KITCHEN - ELEVATION B**

C

**ARIA STONE SHOWROOM
 KITCHEN - ELEVATION C**





CONTRACTOR TO PROVIDE A SWITCHED RECEPTACLE FOR MOUNTING 15 OR 30W ELECTRONIC POWER SUPPLY (110V, 50-60HZ) BEHIND REMOVABLE PLINTH PANEL FOR UNDER-CABINET LED LIGHTS; SEE ELEVATIONS FOR CENTER LINES AND QUANTITY.