

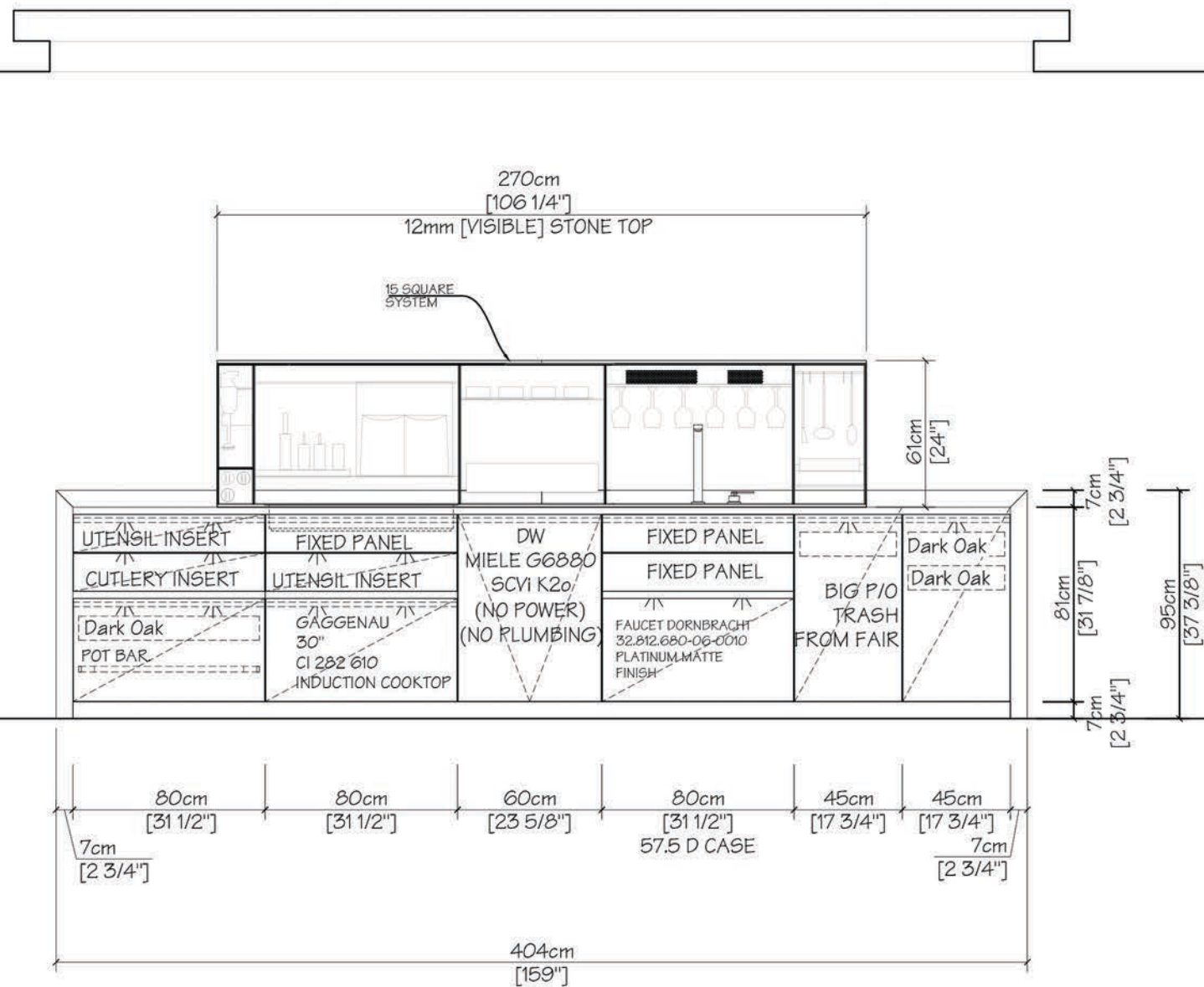
ELEVATION A
DISPLAY 2

SYSTEM: E:SIGN/3.0
FRONTS
RANGE: VANCOUVER/WOOD VENEERED
COLOR: 3535 SMOKED OAK PLANKED [VERTICAL GRAIN]
HANDEL: VERTICAL CHANNEL MATCHING WOOD FINISH
PLINTH: 5CM / MATCHING FRONTS

SIDE PANELS:
RANGE: 13mm/ VANCOUVER
COLOR: 3535 SMOKED OAK PLANKED [VERTICAL GRAIN]

SYSTEM: EGGERSMANN 3.0
FRONTS
RANGE: VENTURA/EFFECT LACQUER
COLOR: 8008 EFFECT LACQUER STEEL GREY
HANDEL: TOUCH LATCHES
PLINTH: 5CM / MATCHING FRONTS

SIDE PANELS:
RANGE: 13mm/ EFFECT LACQUER
COLOR: 8008 EFFECT LACQUER STEEL GREY

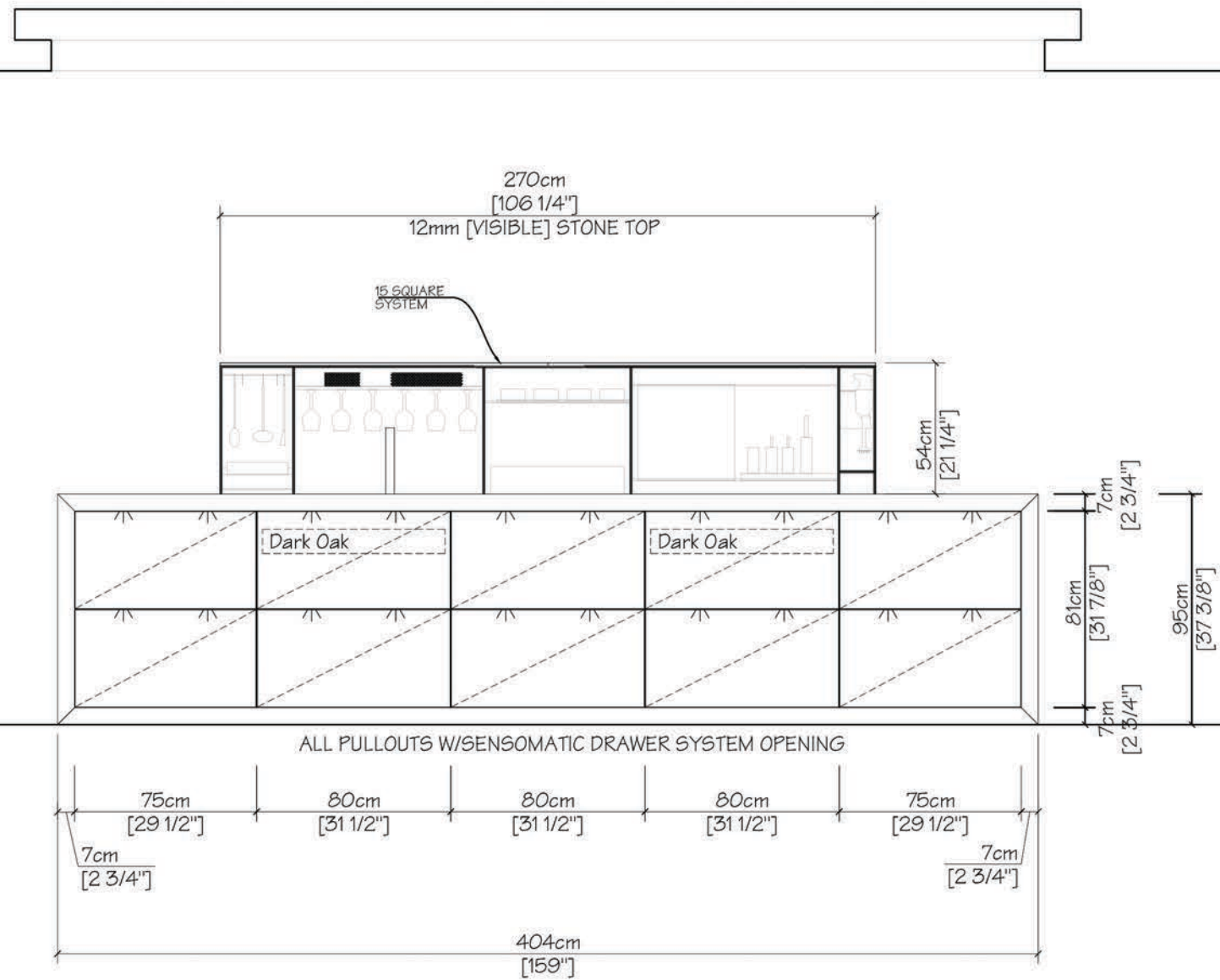


ELEVATION B
DISPLAY 2

SYSTEM: E:SIGN / UNIQUE / NICHE SYSTEM -15 SQUARE

FRONTS
RANGE: VENTURA/EFFECT LACQUER
COLOR: 8008 EFFECT LACQUER STEEL GREY
HANDEL: TOUCH LATCHES
PLINTH: 7CM / MATCHING FRONTS

SIDE PANELS:
RANGE: 13mm/ EFFECT LACQUER
COLOR: 8008 EFFECT LACQUER STEEL GREY



ELEVATION C
DISPLAY 2

SYSTEM: UNIQUE / NICHE SYSTEM -15 SQUARE

FRONTS FINISH: QUARTZITE/CARBONO WATERJET

W/SENSOMATIC DRAWER SYSTEM OPENING

WORKTOP: 7 CM THICK /QUARTZITE/CARBONO WATERJET
WITH 45° BEVELLING ON THE EDGE.

SIDE PANELS: 7 CM THICK /QUARTZITE/CARBONO WATERJET
WITH 45° BEVELLING ON THE EDGE [1 SIDE ONLY]

PLINTH: 7 CM HEIGHT/MATCHING QUARTZITE MATERIAL
WITH 45° BEVELLING ON THE EDGE

NICHE SYTEM: 15 SQUARE VARIOUS SIZES OUTER FRAME ALUMINUM
IN BLACK ANODIZED FINISH + VARIOS ACCESSORIES