

ALL DIMENSIONS ARE CONSIDERING
FINISHED WALLS / FLOORS

PLEASE MAKE SURE WALL
IS FIXED ACCORDINGLY TO
DRAWINGS

Boffi Bar

Model
PRST + Antibes

2" x 6" BLOCKING

Hard wire

Hot + Cold Water + Drain

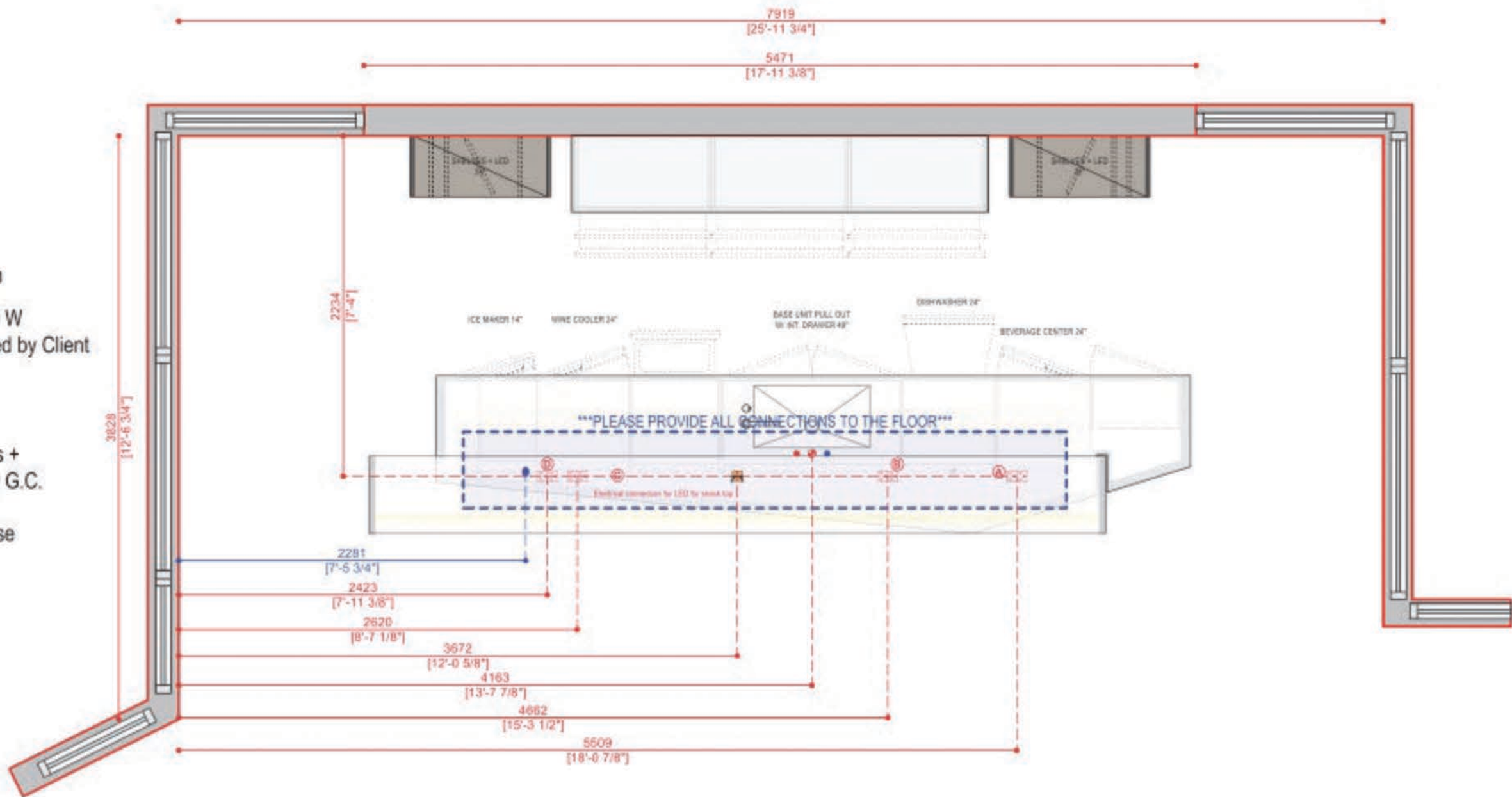
100/240 V , 50/60 Hz, 80 W
Remote Switch is supplied by Client

Ceiling Power Point

Countertop plug numbers +
location to be decided by G.C.

DW Nothing behind DW please

Plugs for appliances



A 24" Sub-zero ADA Beverage Center
115 VAC, 60 Hz
15 amp dedicated circuit
3 prong grounding type

B 24" Gaggenau Dishwasher
1,400 W, 12 amps
120 V, 60 Hz
Connecting Cable 47 1/4" with
Three prong plug (NEMA 5-15P)

C 24" Subzero Undercounter Wine Storage
115 VAC, 60 Hz
15 amp dedicated circuit
3 prong grounding type


D 15" U-LINE Crescent Ice Maker
Water Line required
115 V, 60 Hz
Electrical outlet is in adjacent cabinet

Boffi Bar

Model
PRST + Antibes


ALL DIMENSIONS ARE CONSIDERING
FINISHED WALLS / FLOORS

PLEASE MAKE SURE WALL
IS FIXED ACCORDINGLY TO
DRAWINGS


 2" x 6" BLOCKING

 Hard wire


 Hot + Cold Water + Drain

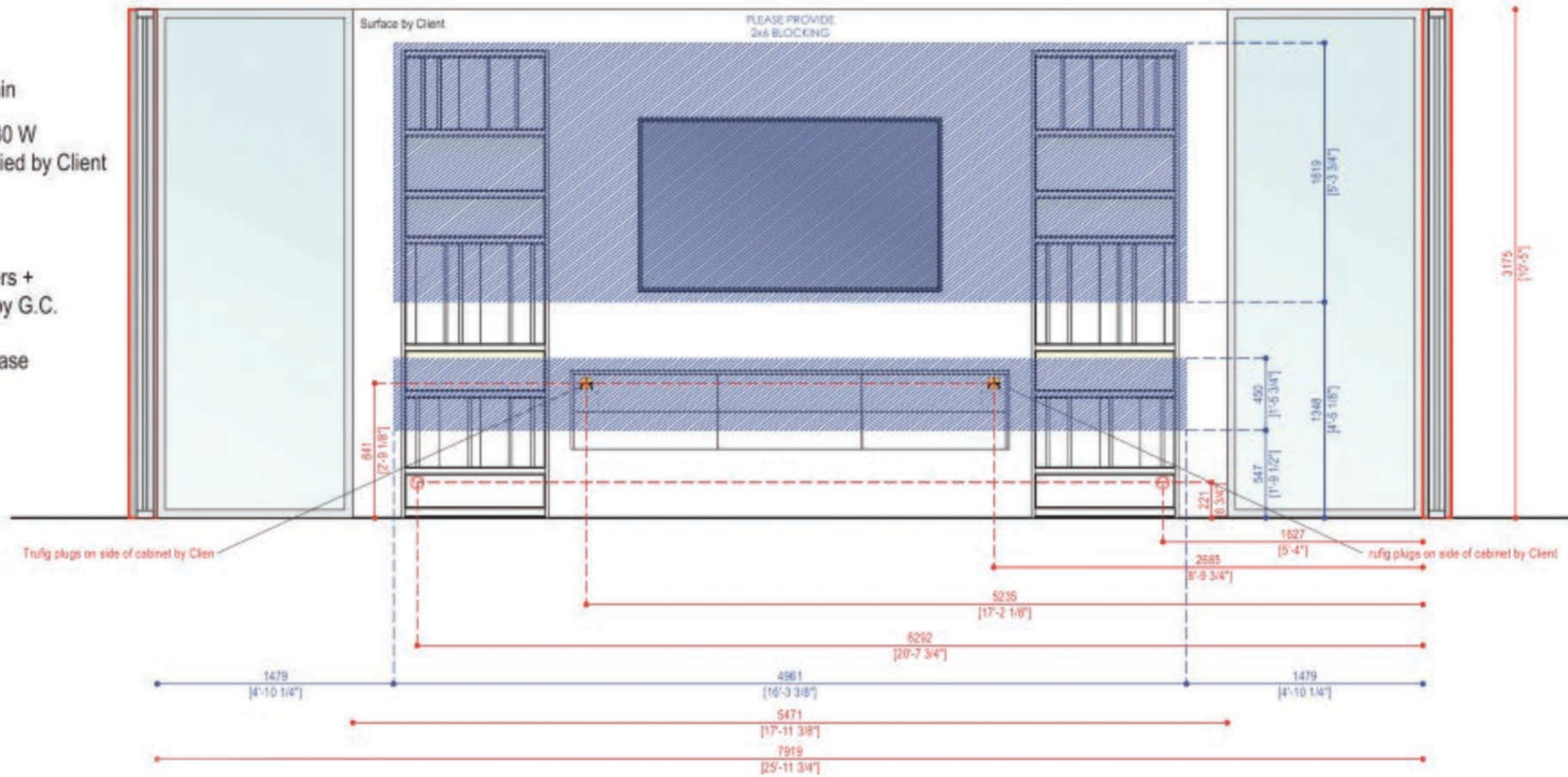
 100/240 V , 50/60 Hz, 80 W
Remote Switch is supplied by Client

 Ceiling Power Point

 Countertop plug numbers +
location to be decided by G.C.

DW Nothing behind DW please

 Plugs for appliances











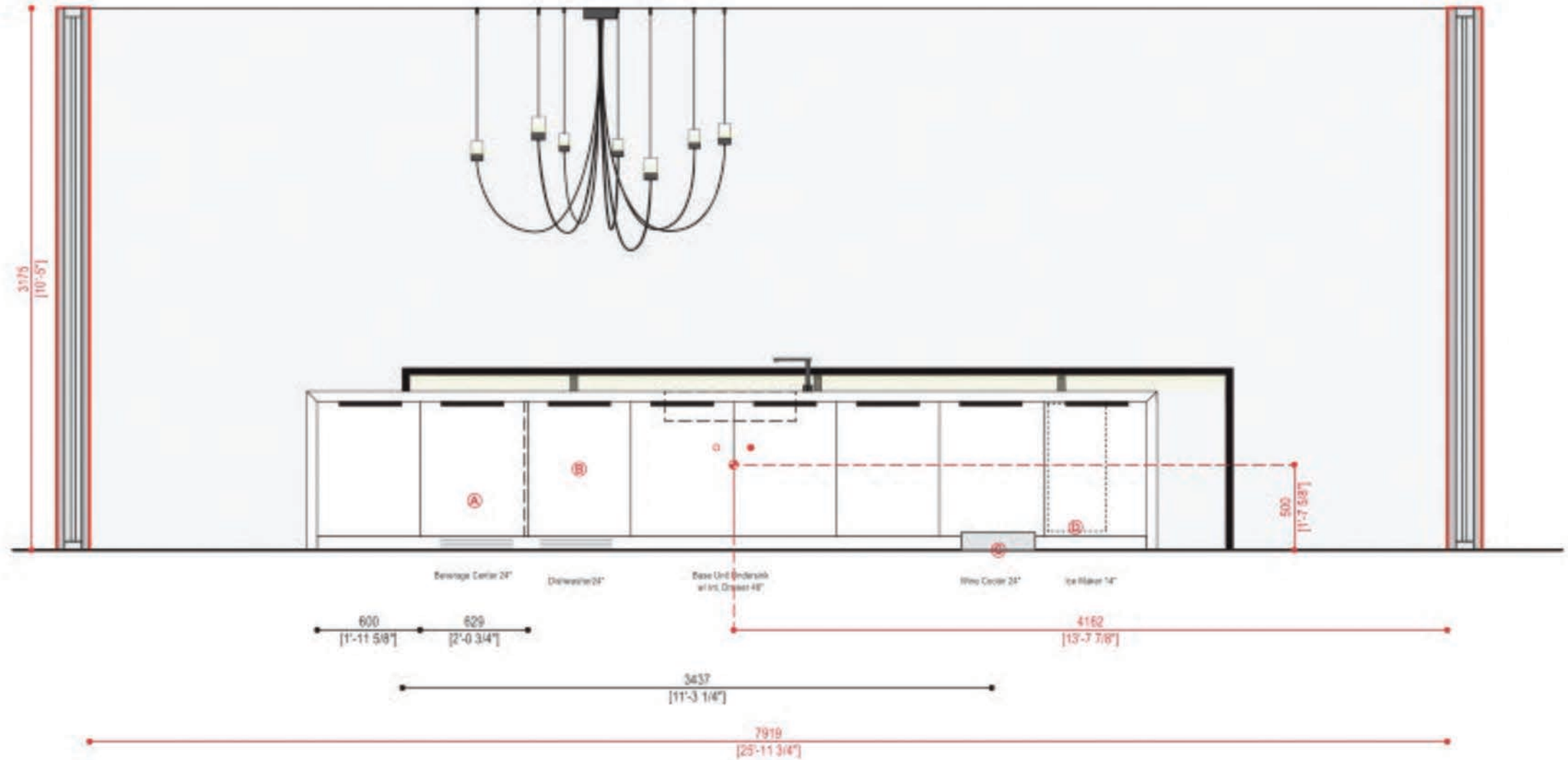
Boffi Bar

Model
PRST + Antibes

ALL DIMENSIONS ARE CONSIDERING
FINISHED WALLS / FLOORS

PLEASE MAKE SURE WALL
IS FIXED ACCORDINGLY TO
DRAWINGS

-  2" x 6" BLOCKING
-  Hard wire
-  Hot + Cold Water + Drain
-  100/240 V , 50/60 Hz, 80 W
Remote Switch is supplied by Client
-  Ceiling Power Point
-  Countertop plug numbers +
location to be decided by G.C.
-  DW Nothing behind DW please
-  Plugs for appliances



- A** 24" Sub-zero ADA Beverage Center
115 VAC, 60 Hz
15 amp dedicated circuit
3 prong grounding type
- B** 24" Gaggenau Dishwasher
1,400 W, 12 amps
120 V, 60 Hz
Connecting Cable 47 1/4" with
Three prong plug (NEMA 5-15P)
- C** 24" Subzero Undercounter Wine Storage
115 VAC, 60 Hz
15 amp dedicated circuit
3 prong grounding type
- D** 15" U-LINE Crescent Ice Maker
Water Line required
115 V, 60 Hz
Electrical outlet is in adjacent cabinet.